



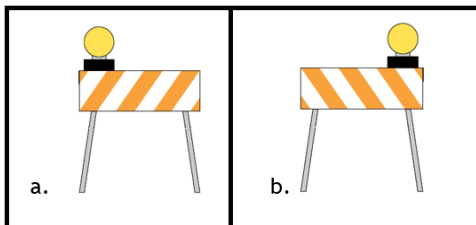


BCCSA Traffic Control Person- Exam

Effective January 15, 2016

*32 correct answers are required to pass the written examination. Read each question carefully and fill in the correct corresponding letter on the provided exam template.
Do not write on the exam booklet*

1. According to the Motor Vehicle Act, TCPs are allowed to direct motorists to drive through a red light.
a. True b. False
2. Sign stands should be weighed down with rocks.
a. True b. False
3. Most work zone crashes occur within the transition area.
a. True b. False
4. When two TCPs cannot see each other and they have no radio contact, it is necessary to use a third TCP to relay signals.
a. True b. False
5. In BC, TCPs can use flags instead of a traffic control paddle to control traffic.
a. True b. False
6. The  sign (C-001-1) must be placed ahead of every TCP station and removed immediately after a TCP is no longer on duty at that station. (This includes breaks)
a. True b. False
7. Which below barricade is tells the traffic to pass to the RIGHT  side of the obstruction?



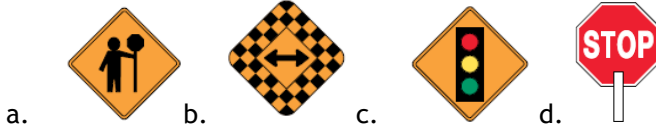


8. What is the above type of barricade (Question 7) used for?
- Permanent road closures
 - Temporary road closures (but in several days duration), channelization within closures
 - Marking temporary hazards, delineating areas temporarily closed to traffic, channelizing vehicles and pedestrians
 - None of the above
9. Back-Up Beepers:
- Are optional
 - Must turn on automatically when in reverse
 - Must be heard above ambient workplace noise
 - Both b. and c.
10. When conducting traffic control at night or during periods of low visibility, a TCP must use:
- Traffic Control Paddle
 - Flashlight with red signaling wand
 - Traffic Control Paddle and Flashlight with Red Signalling Wand
 - None of the above
11. The employer is required to provide:
- Safety footwear, high visibility garment, wrist and ankle bands
 - High visibility garment, wrist and ankle bands, hearing, eye and respiratory protection, hard hats with reflective stripes
 - Rain protection, high visibility garment, warm clothing
 - None of the above
12. When an emergency vehicle arrives with sirens on and lights flashing, a TCP should:
- Signal other TCPs and work crew to inform them that there is an emergency vehicle in transit through the work zone
 - Direct existing traffic out of the way
 - Treat it like a regular vehicle
 - Both a. and b.
13. Which Work Zone part is not included on the standard traffic control layouts in the MoTI manual? The length of this area must be determined based on site specific hazards.
- Advance Warning Area
 - Termination Area
 - Work Area
 - Buffer Area

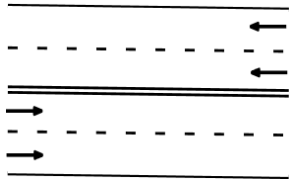




14. Which of the following is a regulatory sign:



15. The road pictured below is a two lane two-way roadway:



- a. True b. False

16. If necessary to control fatigue, a TCP can use a support staff for their traffic control paddle provided that:

- a. the staff (dowel) is approximately 1.3 m
- b. the staff is made of a non-conductive material
- c. the message on the opposite side does not need to be covered or shielded by the TCP's body, to prevent drivers from proceeding in the opposite direction from reading an inappropriate message.
- d. all of the above

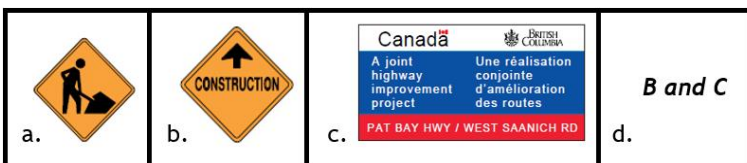
17. In addition to using the C-027 (stop/slow paddle) TCP's need to be able to communicate with the public:

- a. With the use of clear visual communication and hand signals
- b. In a calm and confident manner
- c. Verbally when the road user is confused and when it is safe to do so
- d. All of the above

18. A _____ must be completed prior to controlling traffic.

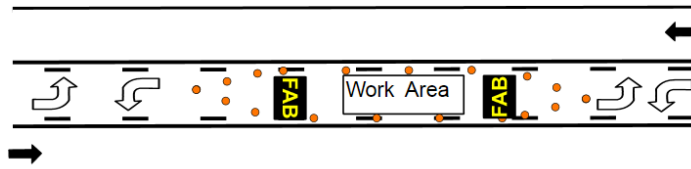
- a. Hazard Assessment
- b. Pre Job Meeting
- c. Traffic Control Plan
- d. All of the Above

19. Which of the following Advance Warning signs must be used to indicate long duration work?



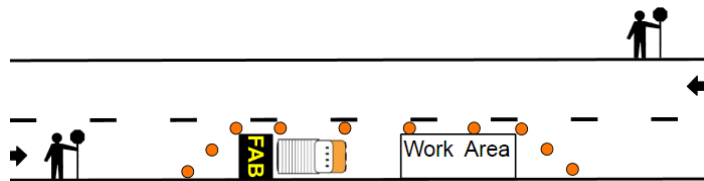


20. According to the MoTI Manual, which mode should the Flashing Arrow Board (FAB) be displayed in the 2 conditions pictured below? (Choose one arrow mode below to answer for both pictures. Refer to the MoTI manual)



Condition 1 - When the location of work does not require any travel lanes to be closed (Pictured above)

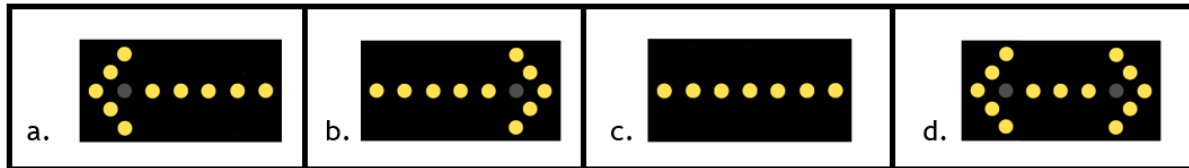
And;



Condition 2- When TCPs are controlling traffic on a normally Two Lane Two-Way Road

Answer:

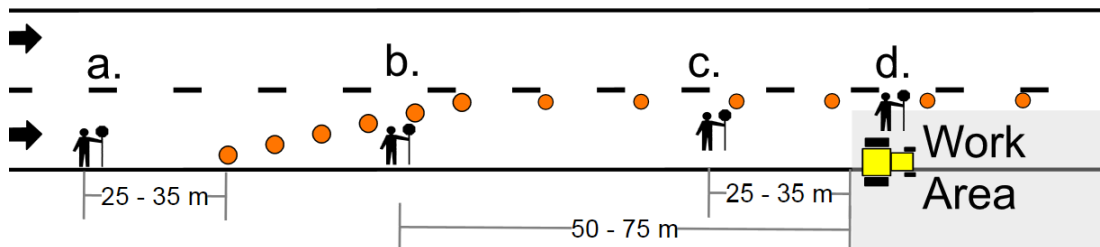
The FAB should be in _____ (option a, b, c, or d below) mode for both of the above pictured conditions.



21. What are important things for TCPs to consider when positioning themselves within a work zone?

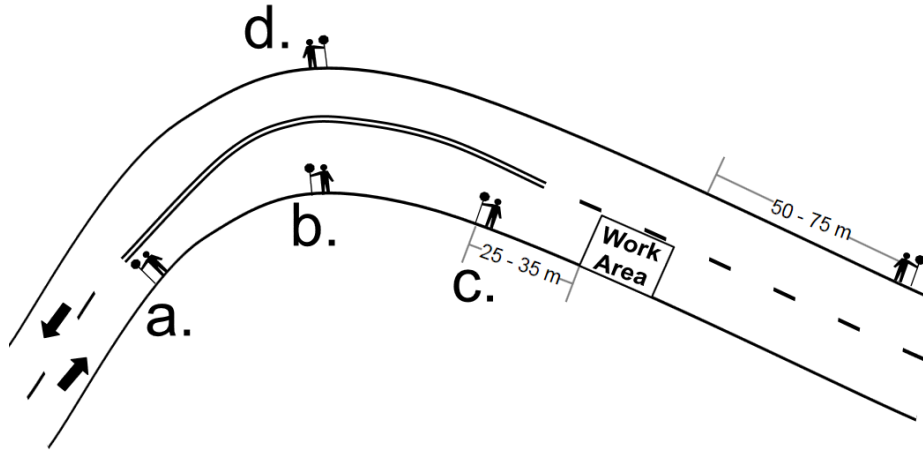
- a. Maintaining an escape route
- b. Being in a visible location for oncoming traffic
- c. Being able to communicate with other workers and road users
- d. All of the above

22. In the below drawing on a multi-lane road, which TCP is positioned in a safe location for controlling traffic with maximum visibility and an escape route?





23. In the below drawing, which TCP is positioned in a safe location for controlling traffic with maximum visibility and an escape route? (The TCPs will use radio communication)



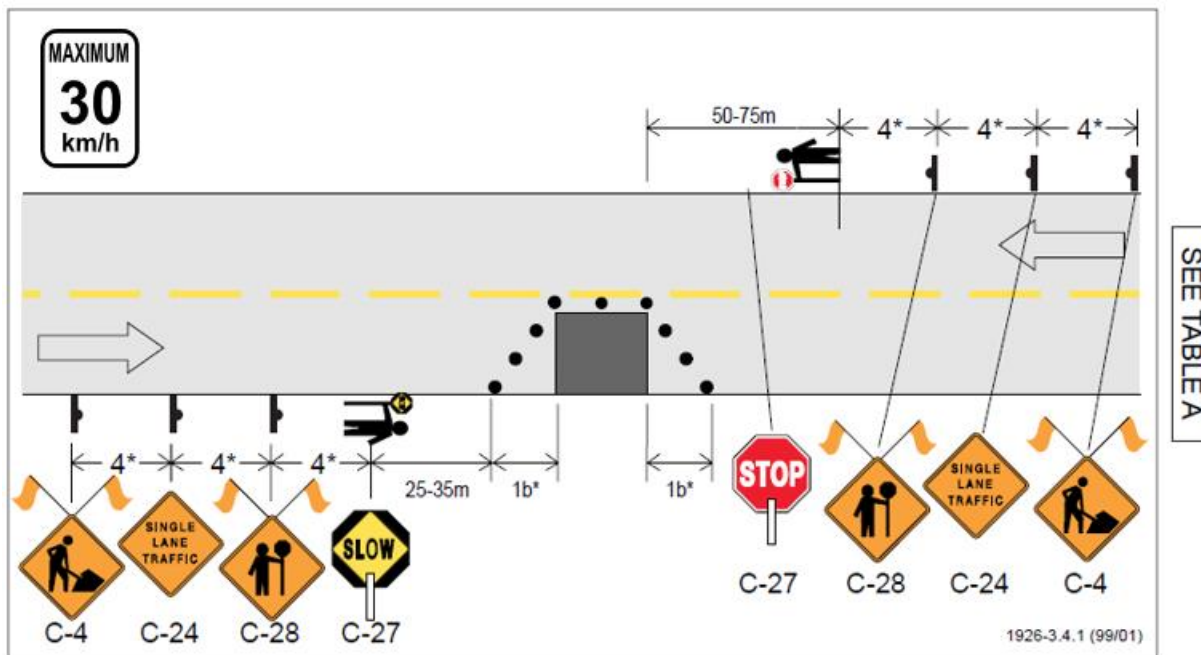
24. A motorist is busy talking on their cell phone and failed to stop for the TCP. The TCP was able to avoid the vehicle because a safe escape route was planned. Luckily, no one was hurt. What should the next steps be for the TCP?
- Notify the Traffic Control Supervisor and file a near miss report
 - Demand the driver produce a driver's license
 - Call WorkSafeBC
 - All of the above
25. Do all near miss incidents have to be reported?
- Yes
 - No
 - Only the real serious ones
 - None of the above
26. Who is able to give a TCP breaks?
- The job foreman can cover for the TCP when they take a break
 - Other workers on site can step in and give the TCP a quick break
 - The Traffic Control Supervisor with expired TCP certification
 - Someone onsite who has valid TCP certification





27. TCPs are given authority to control the movements of traffic on BC roadways through:
- a. WorkSafeBC
 - b. The Motor Vehicle Act
 - c. The BCCSA
 - d. The Fundamental Principles of Traffic Control in the MoTI Manual

Use the following diagram to answer the next question (note the posted regulatory speed in the top left corner):



28. What is the minimum distance between the signs in the advance warning area?
- a. 40 meters,
 - b. 30 meters; the speed limit is less than the minimum on the chart of 50 km/h
 - c. Whatever seems appropriate
 - d. 4 meters





29. The below signal is used to:

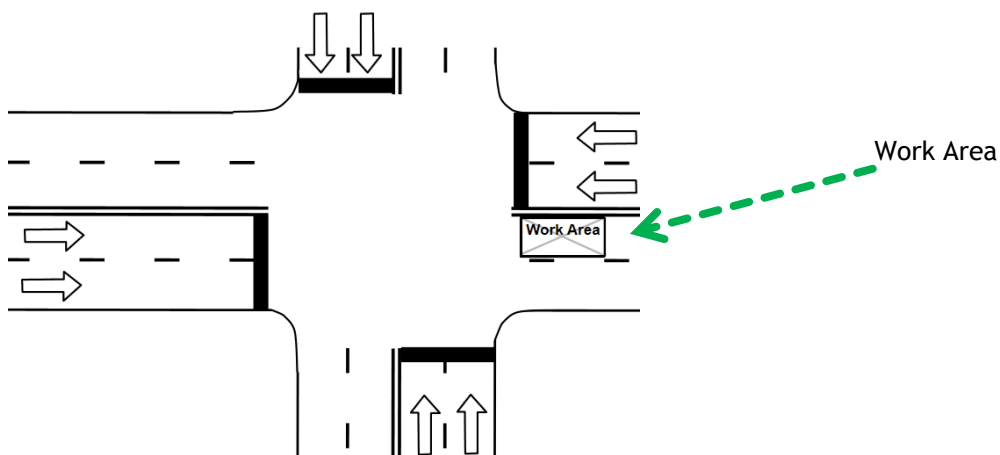


- a. Tell the other TCP to halt traffic
 - b. Tell the other TCP to release their traffic
 - c. Communicate to the operator to come to an emergency stop
 - d. Communicate to the crew that you need a break
30. Traffic Control Supervisors (TCSs) are responsible for ensuring that:
- a. required traffic control devices are in place
 - b. TCPs perform traffic control duties competently and safely
 - c. TCPs are positioned in a safe location clear of potential environmental hazards such as a slide or avalanche
 - d. All of the above
31. How long does an employee have to report a work related injury to the employer/supervisor?
- a. 3 business days
 - b. 24 hours
 - c. As soon as possible
 - d. 5 business days
32. What should you do if you are asked to perform a task that you feel is unsafe?
- a. Write it down and keep a record of it in a safe place
 - b. Refuse the work and explain your concerns to the Traffic Control Supervisor
 - c. Contact WorkSafeBC and stay on the job until a Field Officer arrives
 - d. Discuss your concerns with other TCPs before taking action





33. What should you do if you are asked to work alone in an isolated location?
- Refuse the job
 - Find out who will check on you and when, what to do if checks are not made on time or if no response is received, emergency rescue procedures.
 - Make sure you have a radio
 - This is a normal part of the TCP job and does not need any special procedures
34. Precautions to take if heavy equipment is operating in the work zone include:
- Keeping clear of the machine's attachments
 - Being aware of blind spots
 - Establishing communication with the operator and discussing hand signals
 - All of the above
35. Based on the defined edges of the work area in the picture below, what traffic control plan is required for this short duration job?

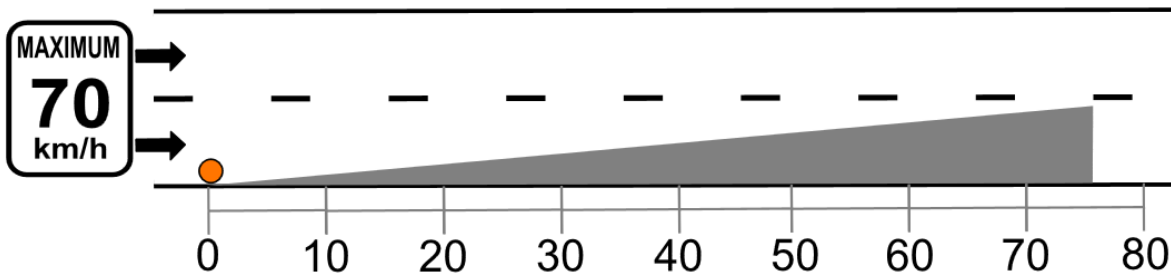


- Figure 4.4.2
- Figure 3.5.4
- Figure 3.5.2
- Figure 3.9.2

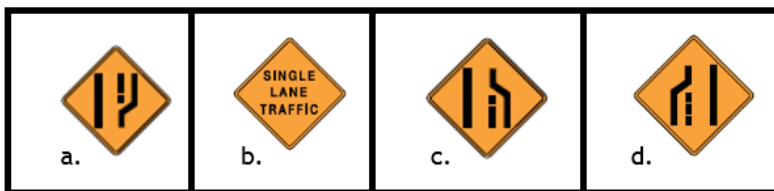




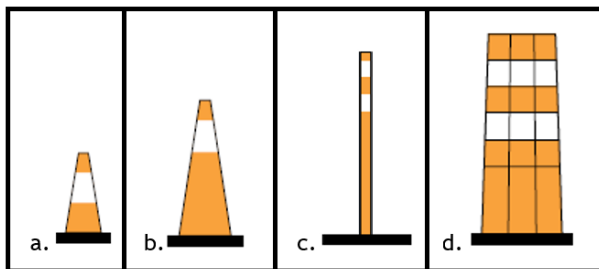
Use the below picture to answer questions 36 to 38:



36. Which below sign correctly informs the driver that the above lane is closed?



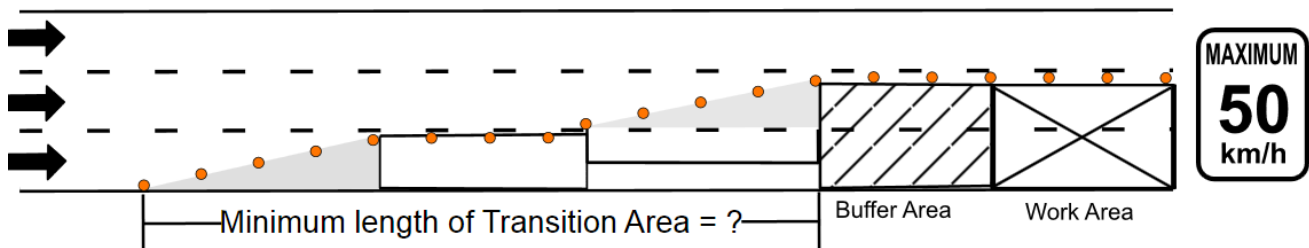
37. What device must be used (minimum requirement) to form the above taper?



38. How many devices (minimum) are required to form the above taper?

- a. 3 min. b. 7 min. c. 8 min. d. 9 min.

39. What is the minimum required distance for the Transition Area for a defined work area that requires two (2) lanes to be closed on a multi-lane roadway at a speed of 50 km/h?



Answer:

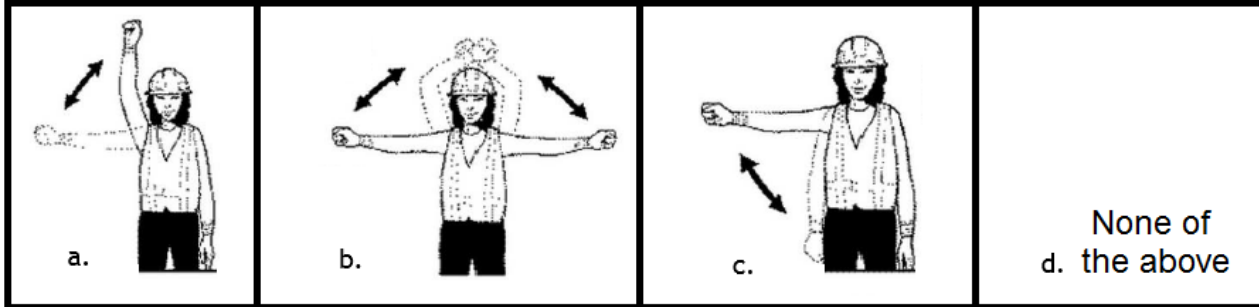
Hint: $_ * + _ * + _ * = _$

The minimum length of the Transition Area in the above drawing is: $_$ meters
(fill out on provided answer sheet)





40. Which signal is used to indicate an all clear situation and instructs TCP partner to allow traffic to proceed from the other direction?



Review all the answers on your exam form to ensure each question has been answered.

Return this exam to the Instructor following review.

The Instructor will grade the exam.

Remain quiet and mindful to those still writing their exam.

